

PROFESSIONAL HIGH SPIN WASHERS



PROFESSIONAL HIGH SPIN WASHERS

INDEX

- 1.- Product Range - Overview
- 2.- Classification
- 3.- Main Features
- 4.- Accessories and Options
- 5.- Technical data
- 6.- Sales Arguments and marketing tools

1. PRODUCT RANGE - OVERVIEW

HIGH – G FORCE 450				
CONTROL TYPE	HEATING	DRAIN TYPE	CAPACITY	
			8 – 9 Kg	10 – 11 Kg
Easy Touch 2 microprocessor	Electric, hot water	Drain Valve	WPR-8V ET2	WPR-10V ET2
		Pump	WPR-8P ET2	WPR-10P ET2
Easy Touch 2 microprocessor Self-service	Electric, hot water	Drain Valve	WPR-8V ET2 SELF	WPR-10V ET2 SELF
		Pump	WPR-8P ET2 SELF	WPR-10P ET2 SELF



WPR-8 ET



WPR-8 ET SELF

1. PRODUCT RANGE - OVERVIEW

HIGH SPIN PROFESSIONAL RANGE :

- **Soft mounted washers** – free standing
- High G force : 450
- 1250 RPM

ADVANTAGES

- ✓ Easy to install, no needs of anchoring to the floor, no extra costs
- ✓ **Savings** du to high extraction of water (40 to 45 % residual humidity)



ONE WASHER - 2 POSSIBLE USES

ON PREMISE LAUNDRY



SELF-SERVICE LAUNDRY



2. CLASSIFICATION

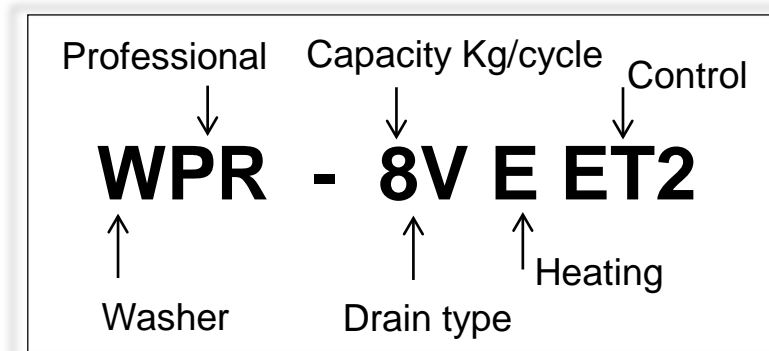
2.1 HEATING :

- **Electric (E)** – Heating elements.
- **Hot water (HW)** – Hot water inlet, reduced operating cost if hot water is available.

Capacity: 8 and 10 kg

Self-service: Tokens, coins and central pay for both kind of heating (E and HW)

Control: EASY TOUCH 2 microprocessor



3. MAIN FEATURES

3.1. – **NEW** EASY TOUCH 2 CONTROL

- Touch Screen 4,3”.
- Programmer: **37 available languages**.
- **USB port** for washer’s software updates and other applications.
- **Same EASY TOUCH 2 control** for **OPL** washers and **coin** washers.



3. MAIN FEATURES

3.2. – OPTIMAL LOADING

Automatic adjustment of water and soap consumptions as well as energy savings, according to the load which is manually indicated in the washer.

ADVANTAGES

- ✓ Energy savings
- ✓ Water savings
- ✓ Chemical savings



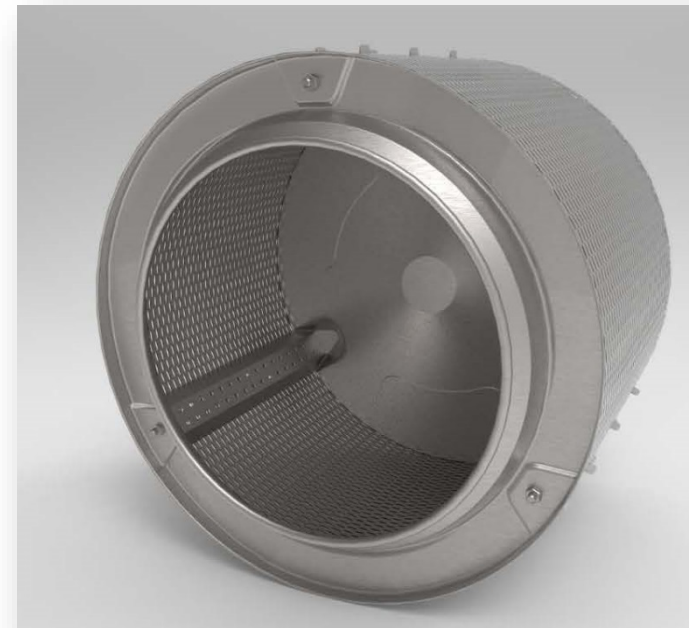
3. MAIN FEATURES

3.3. – AISI 304 STAINLESS STEEL

Outer and inner drum (ribs included) made in AISI 304 stainless steel

ADVANTAGES

- ✓ Increased resistance to external agents
- ✓ Avoid corrosion problems
- ✓ Lengthening the washer lifetime
- ✓ Better quality



3. MAIN FEATURES

3.4. – ROBUST BIG DOOR MADE IN ALUMINUM

- Easy loading
- Biggest diameter on the market for such equipment



516 mm door diameter

373 mm loading diameter

3. MAIN FEATURES

3.5. – OUTER CASING

Panels in grey skinplate, stainless steel look.

ADVANTAGES

- Elegant look
- Stamped front and sides panels
- Easy to clean
- No fingerprints



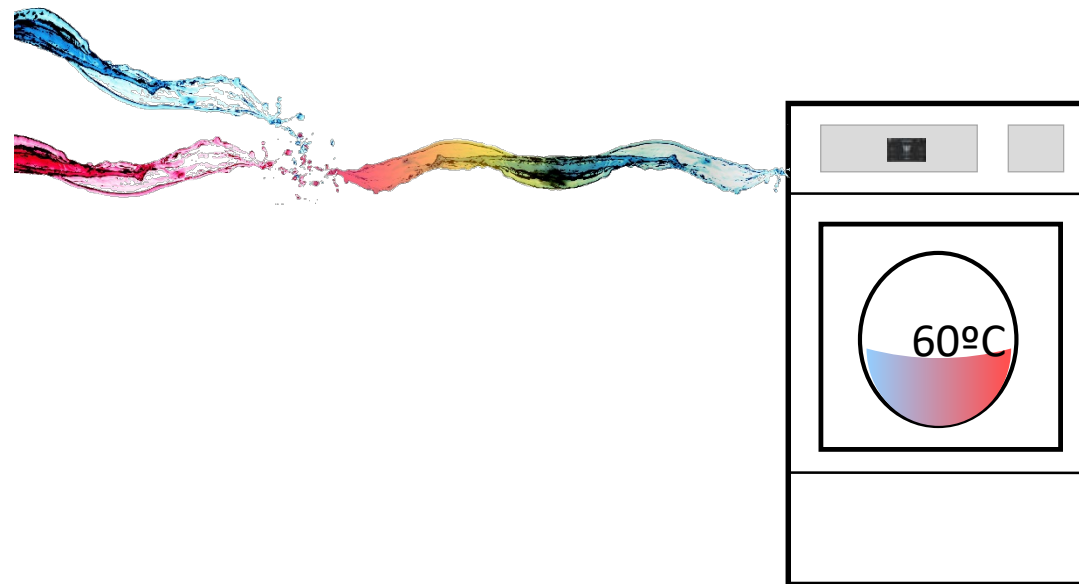
3. MAIN FEATURES

3.6. – AUTOMATIC WATER MIXER (MIXING WATER TEMPERATURES)

Precise mixing different water temperatures, thanks to the accurate temperature sensor on the drum. 2 water inlets.

ADVANTAGES

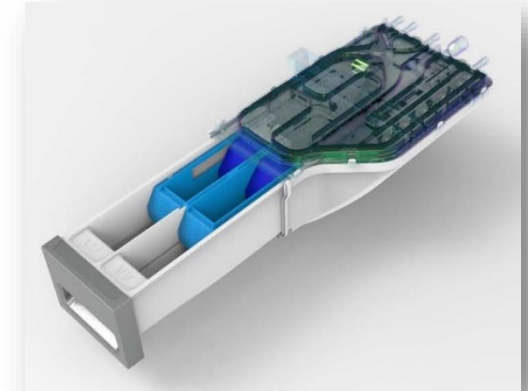
- ✓ Energy savings
- ✓ Reduced washing time.



3. MAIN FEATURES

3.7. – SOAP DOSING SYSTEM

- New water ducts as well as easy detergent connection. Complies with WRAS certification.
- Detergent dispenser drawer with 4 sections.
- Rear connections for automatic liquid dosing. Up to 8 dosing signals (6 extra dosing signals option)



ADVANTAGES

- ✓ Accurate dosing (time and delay)
- ✓ Up to 14 dosing signals



3. MAIN FEATURES

3.8. – WET CLEANING

All washers are equipped with the necessary features to use the WET CLEANING system.

- Full programmable control,
- Accurate control of temperatures and levels of water,
- Washing speed adjustable to very low value (15 RPM)
- Rhythm on/off of 1 sec/1sec
- Manual control of each dosing signals.



Wet cleaning



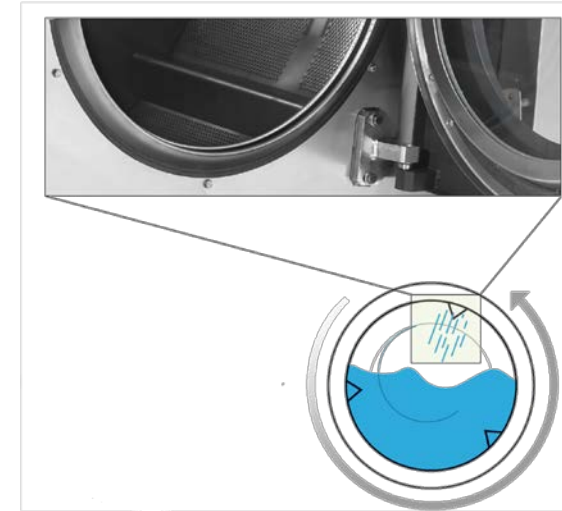
3. MAIN FEATURES

3.9. – SMALL PERFORATIONS IN THE RIBS OF THE DRUM

Water has a cascade effect on the load

ADVANTAGES

- ✓ Maximizes the washing quality with the shortest cycle time possible,
- ✓ Increases considerably the mechanical action inside the drum
- ✓ Reduces the need of water.

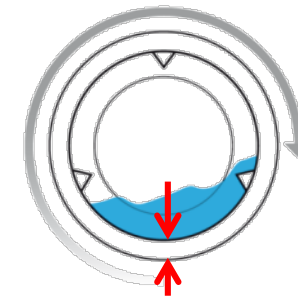


3.10.- DRUM AND TUB'S EFFICIENT DESIGN

A narrow gap between them, as well as the overuse of chemicals and water

ADVANTAGES

- ✓ Reduces the energetic consumption to heat up the water
- ✓ Avoids an overuse of detergents



3. MAIN FEATURES

3.11. – IMBALANCE SYSTEM

Thanks to an advanced technological development and by means of the inverter, the washers detect the imbalance at an early stage.

ADVANTAGES

- ✓ Operation is much smoother, making components long lasting,
- ✓ Reduced washing time,
- ✓ Energy savings.



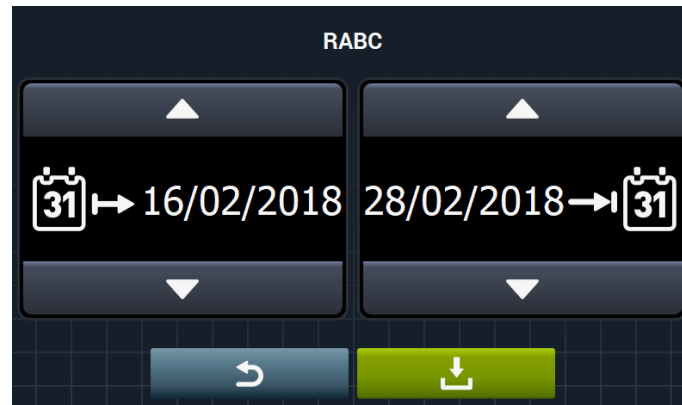
3. MAIN FEATURES

3.12.-TRACEABILITY

All washing processes (temperatures, water levels) are stored in the washer and can be downloaded from USB port.

ADVANTAGES

- ✓ Maintains customer trust and confidence
- ✓ Data for liability claim protection
- ✓ Data integrity
- ✓ Respond quickly in case any malfunction



3. MAIN FEATURES

3.13.- TECHNICAL MENU

Complete technical menus:

- Failure self-diagnosis system (auto-test)
- Alarms
- Information saving (cycles, time working, spinning, alarms, etc....)
- Restricted access area



3.14.- VOLTAGE

- Voltage 400V threephased
- Models 230V single phase
- 110V single phase models available
- All washers are 50/60 Hz

3. MAIN FEATURES

3.15.- STACKABLE WASHER AND DRYER

Easily stackable washer and dryer for OPL and COIN



DPR-8 ET2

WPR-8 ET2



DPR-8 ET2 SELF

WPR-8 ET2 SELF

3. MAIN FEATURES

3.16. – SAFETY LATCH ON DOOR

ADVANTAGES

- Safe and robust door lock design
- Easy to close and open



3.17. – CERTIFICATES

- CE approved
- ETL certificate (USA and Canada)
- WRAS approval (UK)
- EAC (Russia)



4. ACCESSORIES AND OPTIONS

OPTIONS

- **Double drain kit (valve models)**
 - ✓ Allow the recovery of water, with important savings
- **Drain pump kit**
 - ✓ Helps to drain water when drainage is in an upper position from the floor or other...
- **“NC” Normally closed Drain**
 - ✓ In case of any electric failure water will be hold inside the drum
- **Ship Voltage (440-480/III/50-60 Hz/no neutral)**
 - ✓ Most of washer models ready to install on a vessel or oil rigs
- **6 extra signals kit for liquid dosing**
 - ✓ Up to 14 dosing signal
- **Silicone gasket on door**
 - ✓ Ideal for greasy spots

4. ACCESSORIES AND OPTIONS

OPTIONS

- **Reverse door opening**
 - ✓ Allow to adjust the opening sense as required
- **Automatic unlock device**
 - ✓ Allow to open washer door in case of electric failure
- **Stainless steel AISI-304 body**
 - ✓ Elegant look
 - ✓ Increased resistance to the external agents
 - ✓ Avoid corrosion problems
 - ✓ Lengthening the washer
 - ✓ Better quality



4. ACCESSORIES AND OPTIONS

OPTIONS

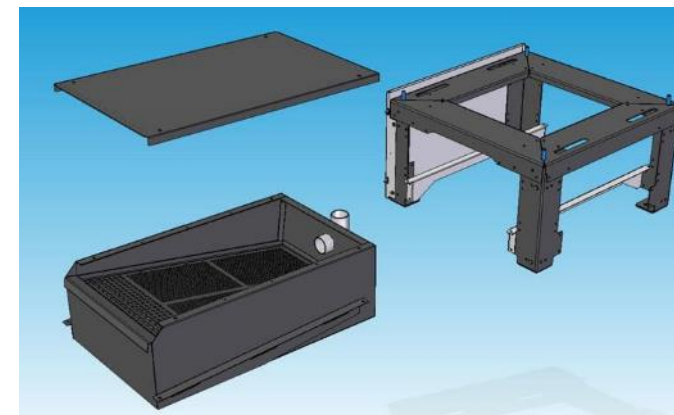
- **WIFI module**
 - ✓ Wireless communication with washer for management (input / output data)



4. ACCESSORIES AND OPTIONS

Model for washing mops (only models equipped with drain valve)

- Special washing programs for mops
- Plinth-base for filtering after drainage



4. ACCESSORIES AND OPTIONS

Plinth-base for water recovery

ADVANTAGES

- ✓ Energy and water savings

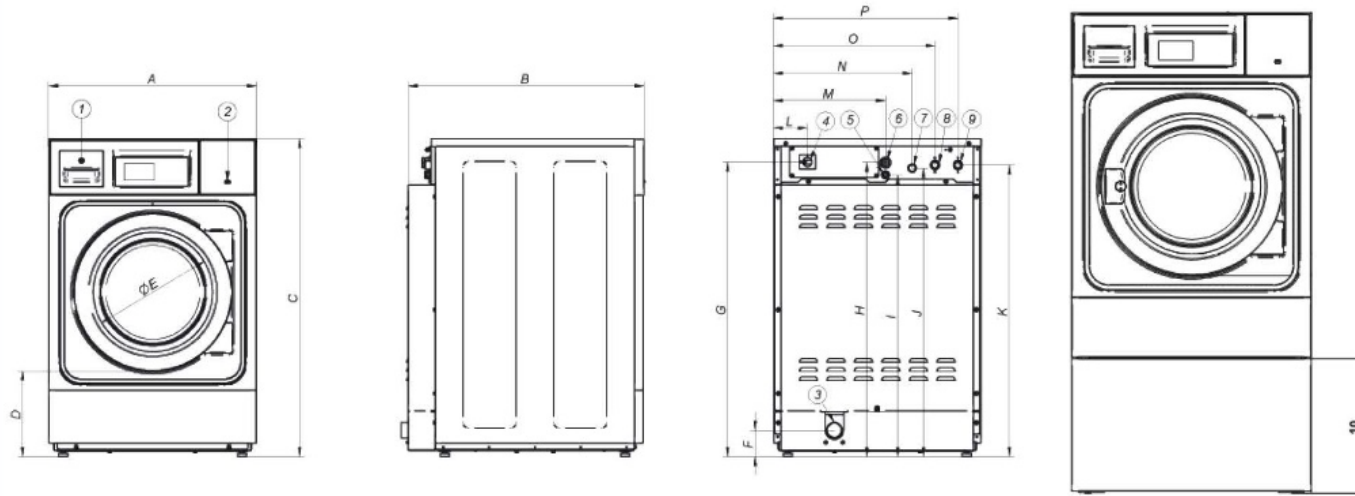
Plinth-base for ergonomics

ADVANTAGES

- ✓ Make easier the loading and unloading



TECHNICAL DATA	UNIT.	WPR8 V	WPR8 P	WPR10 V	WPR10 P
DRUM					
Load capacity 1:9 / 1:10	Kg	9/8	9/8	11/10	11/10
Volume	l	80	80	100	100
Diameter	mm	532	532	532	532
Depth	mm	360	360	425	425
GENERAL DETAILS					
Washing speed / Spining speed	r.p.m.	50/ 1.250	50/ 1.250	50/ 1.250	50/ 1.250
G Factor	-	450	450	450	450
Self-service version	-	Yes	Yes	Yes	Yes
Double drain	-	Opt	No	Opt	No
Weighing system / tilting system	-	No	No	No	No
DOOR					
Height center door / Height base door	mm	537/280	537/280	537/280	537/280
Loading diameter	mm	373	373	373	373
DYNAMIC FORCE					
Static Load	KN	0,14	0,14	0,15	0,15
Maximum Dynamic load	KN	0,5	0,5	0,6	0,6
Vertical maximum load	KN	0,64	0,64	0,75	0,75
Max revolutions	r.p.m.	1.250	1.250	1.250	1.250
Frequency of dynamic load	-	18,33	18,33	18,33	18,33
POWER					
Motor	kW	0,75	0,75	0,75	0,75
Electric heating	kW	6	6	6	6
Hot water heating	kW	0	0	0	0
Max. power electric model	kW	6,25	6,25	6,25	6,25
Max. power HW model	kW	0,75	0,75	0,75	0,75
Max. power steam	kW	N/A	N/A	N/A	N/A
CONNECTIONS					
Water inlet	inch	3/4"	3/4"	3/4"	3/4"
Drain	mm/inch	2"	1" (Pump)	2"	1" (Pump)
DIMENSIONS / PACKING DIMENSIONS					
Width / width	mm	680/710	680/710	680/710	680/710
Depth / depth	mm	698/832	698/832	742/832	742/832
Height / height	mm	1.040/1.130	1.040/1.130	1.040/1.130	1.040/1.130
Net weight / Gross weight	kg	140/150	140/150	150/160	150/160



- 01. Soap dispenser
- 02. Usb port
- 03. Drain
- 04. Main switch
- 05. Electric connection to liquid soap pumps
- 06. Electrical connection
- 07. Liquid soap inlet
- 08. Cold water inlet
- 09. Hot water inlet
- 10. Plinth height 389mm

	A	B	C	D	E	F	G	H	I	J	K	L	M	N	O	P	Q
WPR-8 V	680	698	1040	278	373	86	964	962	922	944	954	110	366	453	528	603	199
WPR-8 P	680	698	1040	278	373	-	964	962	922	944	954	110	366	453	528	603	-
WPR10 V	680	742	1040	278	373	86	964	962	922	944	954	110	366	453	528	603	199
WPR-10 P	680	742	1040	278	373	-	964	962	922	944	954	110	366	453	528	603	-

6. SALES ARGUMENTS



6. SALES ARGUMENTS

6.1.- SALES ARGUMENTS VS. COMPETITORS

FEATURES

- ✓ User friendly and totally programmable with **EASY TOUCH 2**
- ✓ **8 dosing signals as standard**
- ✓ **USB Connection** . PC software free of charge for programming, traceability, data analyses....
- ✓ **Remote communication ready / Multi-payable systems**
- ✓ **Short Washing cycles** (Heating Power 6 kW)
- ✓ **Optional**
 - WIFI connection
 - Silicone gasket
 - Advertisements shown on display
 - Delayed opening in case of electric power cut
 - “NC” Normally closed Drain
 - Ship Voltage ...

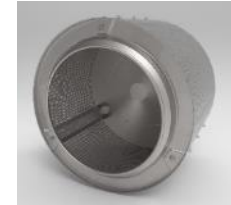


6. SALES ARGUMENTS

6.1.- SALES ARGUMENTS VS. COMPETITORS

ROBUSTNESS

- ✓ **Robust door made in Aluminum**
- ✓ **Stainless Steel AISI-304 made inner drum**
- ✓ **Stainless Steel AISI-304 made outer drum**
- ✓ **Stainless Steel AISI-304 made ribs**
- ✓ **Easy to maintain, clean, more industrial, etc ...**
- ✓ **Industrial house bearing and bearings (Up to 15 000 working hours)**
- ✓ **Gear same as industrial washer**
- ✓ **Inverter same as industrial washer**
- ✓ **Industrial door lock system**
- ✓ **Optional:**
 - **Stainless steel AISI-304 panels**

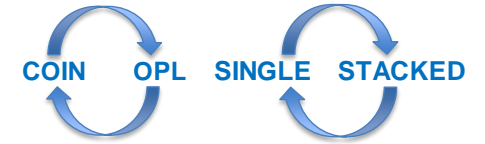


6. SALES ARGUMENTS

6.1.- SALES ARGUMENTS VS. COMPETITORS

VERSATILITY

- ✓ **OPL ↔ COIN** . Standard model easily convertible
- ✓ **SINGLE ↔ STACKED** . Standard model easily stackable with a dryer
- ✓ **ELECTRIC → HOT WATER** . Standard electric model easily convertible to hot water model
- ✓ **DRAIN VALVE → PUMP**. Standard model easily convertible . Easy access and service
- ✓ **Suitable for many sectors:**
 - Restaurants
 - Gyms
 - Camping
 - Mop Cleaning
 - Kinder Gardens
 - Cleaners shops...



6. SALES ARGUMENTS

6.1.- SALES ARGUMENTS VS. COMPETITORS

EFFICIENCY

- ✓ **Intelligent Weighing system**
- ✓ **Optimal loading**
- ✓ **Water Recovery tanks ready**
- ✓ **High G-FACTOR 450 . Reduced residual moisture Reduced drying time**



6.2.- COMPARISONS Vs. COMPETITORS

HOME APPLIANCE



ASKO



LG



ELECTROLUX



SPEED-QUEEN



ASKO



LG



ELECTROLUX



SPEED-QUEEN



GIRBAU



DANUBE

INDUSTRIAL WASHER



DANUBE WED



ROBUSTNESS						
MATERIALS	ASKO	LG	ELECTROLUX	SPEEDQUEEN	GIRBAU	DANUBE
External panels	Painted	Painted	Painted	Painted	Skinplate	Skinplate
Door	Plastic	Plastic	Plastic	Plastic	Iron	Aluminum
Door lock	Semi-ind	Semi-ind	Semi-ind	Semi-ind	Semi-ind	Industrial
Inner drum	Stainless steel	Stainless steel	Stainless steel	Stainless steel	AISI304 S/S	AISI304 S/S
Outer drum	Stainless steel	Stainless steel	Stainless steel	Stainless steel	AISI304 S/S	AISI304 S/S
Muffle	Yes, domestic	Yes, domestic	Yes, domestic	Yes, semi-ind	Yes, semi-ind	No
Ribs	Plastic	Plastic	Plastic	Plastic	Stainless steel	AISI304 S/S
Gear	Domestic	Domestic	Domestic	Semi-ind	Semi-ind	Industrial
Inverter	Domestic	Domestic	Domestic	Semi-ind	Semi-ind	Industrial

6.2.- COMPARISONS Vs. COMPETITORS

HOME APPLIANCE



ASKO



LG



ELECTROLUX



SPEED-QUEEN



ASKO



LG



ELECTROLUX



SPEED-QUEEN



GIRBAU



DANUBE



INDUSTRIAL WASHER



DANUBE WED

FEATURES						
FEATURES	ASKO	LG	ELECTROLUX	SPEEDQUEEN	GIRBAU	DANUBE
Control type	Elec. Simple	Elec. Simple	Elec. Simple	Elec. Simple	Elec. Simple	Touch (4,3")
Programmable	No	No	No	No	No	Yes, standard
Dosing signals	Optional	Optional	No	Optional	Optional	Yes, standard
Nb dosing signals	4		0	4	4	8 (+6 opt.)
USB Port	No	No	No	No	No	Yes, standard
Soap box	Front – 3 comp.	Front – 3 comp.	Front – 3 comp.	Front – 4 comp.	Front – 4 comp.	Front - 4 comp.
Plinth option	Yes	Yes	Yes	Yes	Yes	Yes
S/S panels opt.	No	No	No	Yes	Yes	Yes

DANUBE INTERNATIONAL

Parc d'Activités de Sologne - BP 19 - 41600 Lamotte-Beuvron - FRANCE

Tél.: +33 (0)2 54 88 05 76

Fax: +33 (0)2 54 96 89 04

Support technique: +33 (0)2 54 88 83 22 – support@danube.fr

SAV Pièces: +33 (0)2 54 88 83 65 – Parts@danube.fr

info@danube-international.com

www.danube-international.com - www.danube.fr



PROFESSIONAL HIGH SPIN WASHERS
FOR A QUALITY WASHING

WPR 8 ET2
WPR 10 ET2

FEATURES

- High spin washer extractor. Free standing, no need to be anchored to the floor.
- G Force +50.
- Body in grey skinplate. Drum and tub in AISI-304 stainless steel.
- Detergent dispenser with 4 compartments.
- 8 signals for automatic liquid dosing, programmable in time and delay.
- 2 water inlets.
- Electronic control of imbalance with frequency inverter, that detects the unbalanced load before spinning. Standard frequency: 50 - 60 Hz.
- New microprocessor EASY TOUCH 2 with touch screen 4,3": 26 preset programs.
- Possibility of programming, exporting and importing programs without limit, software updates, through USB port.
- Standard traceability : All washing process (temperatures, water levels) is stored in the washer and can be extracted to a PC by means of a USB drive.
- WET CLEANING: standard in the microprocessor; fully adjustable water levels and washing speed for delicates.
- OPTIMAL LOADING system: standard to optimize water and chemicals consumptions according to the load.
- LOADING AID feature with water and rotation control of the drum for easy loading of the linen.
- Models available with drain valve or drain pump.
- Valve models especially designed for washing mops.
- Self-service version available with coin meter.
- Leveling feet included.
- CE, WRAS, ETL and EAC approved.

OPTIONS

- Relay card for 6 extra dosing signals (total 14 signals).
- Self-Service Kit: Central pay or coin/token kit + coin/token box
- Plinth to improve loading height
- Plinth for mops (filter included). Only mod. with valve.
- Plinth for water recovery
- Double drain kit (valve mod. only) - Drain pump kit
- Reverse opening door
- Delayed opening door (in case of power outage)
- AISI-304 stainless steel panels
- WiFi module.
- Door silicone gasket
- "NC" normally closed drain
- Valve - pump transformation kit

